

# Cell-Tech®

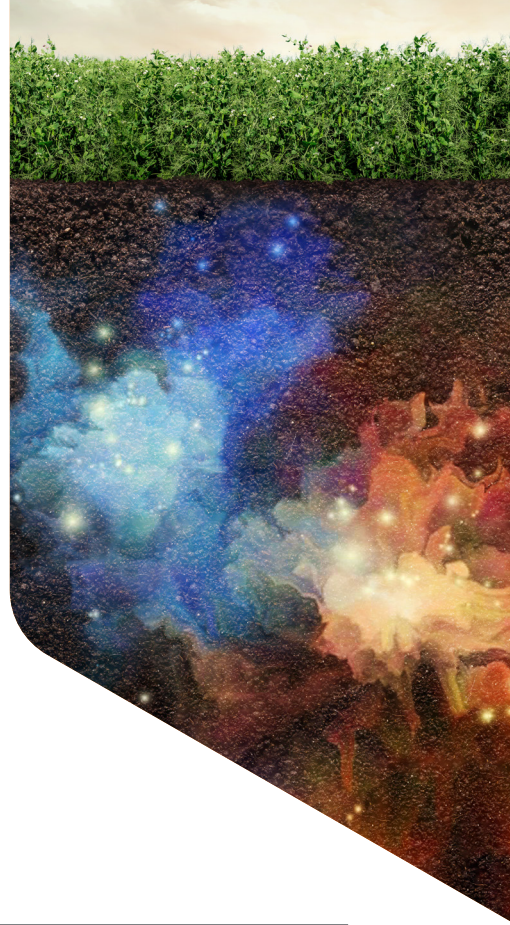
Lentil · Pea · Soybean

## Product Overview

### Nitrogen-Fixing Inoculant

Cell-Tech is a single-action inoculant that contains specially selected rhizobia that can provide effective nodulation to enhance nitrogen-fixation, even in cooler soils - increasing yield potential as planting conditions change.

If phosphate is limited, Cell-Tech can be applied at the same time as JumpStart, for improved phosphate uptake.



#### Cell-Tech Is Available In The Following Formulations

Crop	Inoculant species	Cell-Tech formulations available
Pea, Lentil	<i>Rhizobium leguminosarum</i>	Liquid, peat, non-sterile peat, and granular
Soybean	<i>Bradyrhizobium japonicum</i>	Liquid, peat and, granular

## Application

Please read the label before application for complete use instructions.

### Peat Application

Cell-Tech peat has its own sticker in the formulation so no additional stickers are required. Apply Cell-Tech dry to pre-moistened seed, or add water while applying Cell-Tech, or mix with cool, clean water and apply to seed as a slurry (refer to table). Make sure that the inoculated seed is evenly coated. Inoculate bare seed with Cell-Tech peat up to 48 hours prior to seeding.

#### Cell-Tech Peat Application

Cell-Tech peat				
One 2.2 kg (4.8 lb) bag inoculates				
Crop	Unit	bu	lb	Water (litres)
Pea	—	50	3,000	4.0
Lentil	—	30	1,800	2.5
One 2.32 kg (5.1 lb) bag inoculates				
Soybean	30	25	1,500	N/A

### Non-sterile Peat Application

Cell-Tech NS peat has its own sticker in the formulation. A separate sticker is not needed. Apply Cell-Tech NS onto seed in the drill box and mix thoroughly until uniformly coated. Layering seed and inoculant while mixing will provide thorough coating of all seeds. Inoculate bare seed with Cell-Tech NS peat up to 48 hours prior to seeding.

#### Cell-Tech NS Peat Application

Cell-Tech NS peat		
One 2.83 kg (6.2 lb) bag inoculates		
Crop	bu	lb
Pea	25	1,500
Lentil	25	1,500



## Granular Application

Cell-Tech granular should be applied directly with the seed in the seed row using a granular tank for application. Application rates vary according to row spacing (refer to table).

- Fill the tank to match or slightly exceed seed requirements.
- Do not overfill the tank as to avoid compaction.
- Pour into tank through a screen.
- If augering, please do so at low speeds to avoid damage to Cell-Tech granular.
- Do not mix Cell-Tech granular in the same tank with seed or fertilizer.
- Do not leave Cell-Tech granular in the tank overnight as condensation can cause lumps to form.

## Cell-Tech Granular Application Rates

Package size	Application rate	Cell-Tech pea/lentil		Cell-Tech soybean		
		18.0 kg bag	454 kg bag	Application rate	18.0 kg bag	454 kg bag
Row spacing	lb/ac	ac/bag	ac/bag	lb/ac	ac/bag	ac/bag
7 in	6.6	6.1	151.7	6.2	6.5	161.5
8 in	5.8	6.9	172.6	5.4	7.3	185.4
9 in	5.1	7.8	196.3	4.7	8.4	213.0
10 in	4.6	8.7	217.6	4.3	9.3	232.8
12 in	3.8	10.5	263.4	3.6	11.0	278.1
15 in	3.1	13.3	333.7	2.9	13.8	345.2
24 in	—	—	—	1.8	22.2	556.1
30 in	—	—	—	1.4	28.6	715.0

Note: The bulk density of Cell-Tech granular is approximately 0.6 g/cm<sup>3</sup> (37 lb/ft<sup>3</sup>).

## Liquid Application

### Pea/Lentil

Cell-Tech liquid should be applied directly to pea or lentil seed at a rate of 2.5 fluid ounces per bushel (60 lb) of seed (75 ml/27 kg) or 2.1 fluid ounces per 50 pounds (63 ml/23 kg). The planting window for Cell-Tech liquid on bare pea or lentil seed is 48 hours.

### Soybean

Cell-Tech liquid should be applied directly to soybean seed at a rate of 2.5 fluid ounces per bushel (60 lb) of seed (75 ml/27 kg) or 2.1 fluid ounces per 50 pounds (63 ml/23 kg) of seed. The planting window for Cell-Tech liquid on bare soybean seed is four days.

## Cell-Tech Liquid Application

Cell-Tech liquid	Bag size	One bag inoculates		
		Units	bu	lb
Crop	Litres			
Pea/Lentil	3.0	—	40.0	2,400
	9.8	—	130.0	7,840
Soybean	3.1	50	41.7	2,502
	12.5	200	167.0	10,000

Cell-Tech liquid can be applied with other seed treatments, but the planting window may be reduced. Visit [nexusbioag.com](http://nexusbioag.com) for more details.

If you would like more information or have questions, contact your local NexusBioAg Representative or visit [nexusbioag.com](http://nexusbioag.com)

**NexusBioAg**